



**Cirrus Consortium**  
Waste Framework



# **Cirrus Consortium** **Waste Management** **Framework**

# The Waste Framework



**Cirrus Consortium**  
Waste Framework

The Cirrus Consortium Waste Management Framework is the newest addition to our framework portfolio providing quick, flexible and Public Contracts Regulations (PCR) compliant access to a range of services including (but not limited to):

- ▶ Total waste management
- ▶ Waste drop off solutions
- ▶ Recycling services
- ▶ Skip hire services
- ▶ Provision of waste receptacles
- ▶ Office waste collections
- ▶ Hazardous waste management
- ▶ Clinical waste management
- ▶ Waste management consultancy & advice services



**MAR 23 –  
MAR 27**



## **Main Contact**

Lucy Jackson  
Consortium Coordinator  
07983 532407  
ljackson@cirruspurchasing.co.uk



## **Procurement Contact**

Claire Paton  
Director of Consultancy  
07828 143935  
cpaton@cirruspurchasing.co.uk

# About Us

Cirrus Purchasing Ltd is a specialist procurement consultancy and public sector framework provider supporting the social housing, public and private sectors.

The Cirrus Consortium is a group of contracting authorities across England, Scotland and Wales who have joined together to establish frameworks for a range of products and services that comply with the Public Contracts Regulations (PCR).

Cirrus Purchasing created the Consortium frameworks with our consultancy clients in mind, so all of our arrangements are designed with maximum flexibility, ease, compliance and simplicity at their core.

We manage the frameworks on behalf of the Consortium, every solution we set up is informed by our members who have free input into the arrangements.



# Management Fees

There are no joining fees or ongoing costs payable by members for the use of our frameworks. Framework suppliers are required to make payment to Cirrus Purchasing of 0.5% of invoiced turnover from call-off contracts issued via the waste framework to cover framework management costs.

**0.5%**

**Supplier  
Rebate**



**Cirrus Consortium**  
Waste Framework

# Framework Benefits



**Cirrus Consortium**  
Waste Framework

**12**

**Leading suppliers**

**Social Value:**  
**Tailored to suit, or off the shelf solutions**



**Quicker procurement process – flexible direct award options**

**Geographical lots**



**0.5%**

**Supplier Rebate:**

**Sector leading low management fee**

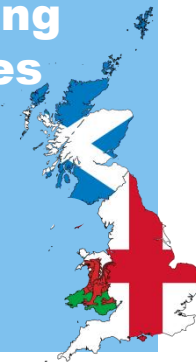
**Social value & environmental sustainability assessed at tender**



**Flexible choice of contracts – use suppliers terms, your own terms or our template**



**For use by contracting authorities across England, Scotland & Wales**



**Framework rates or bespoke pricing to suit**



# Framework Suppliers

12

Leading suppliers



Circle



FTS Contract Notice Reference Number

2022/S 000-030879

FTS Contract Award Notice Reference Number:

2023/S 000-007255

Framework Duration:  
Mar 23 – Mar 27

# Framework geographical lots

12

Leading suppliers

	NE	NW	Y&H	EM	WM	EE	LDN	SE	SW	W	S
Acumen Waste Services	✓	✓	✓	✓	✓	✓	✓	✓	✓	✓	✓
Biffa Waste Services	✓	✓	✓	✓	✓	✓	✓	✓	✓	✓	✓
Bywaters							✓				
Circle Recycling		✓									
Circle Waste	✓	✓	✓	✓	✓	✓	✓	✓	✓	✓	✓
City Centre Containers		✓									
Enva England				✓							
Enviro Skip Hire		✓									
Go Green	✓	✓	✓	✓	✓	✓	✓	✓	✓	✓	✓
Reconomy	✓	✓	✓	✓	✓	✓	✓	✓	✓	✓	✓
Recycling Lives	✓	✓	✓	✓	✓	✓	✓	✓	✓	✓	✓
Suez Recycling & Recovery	✓	✓	✓	✓	✓	✓	✓	✓	✓	✓	✓

- Lot 1: North East
- Lot 2: North West
- Lot 3: Yorkshire & Humber
- Lot 4: East Midlands
- Lot 5: West Midlands
- Lot 6: East of England
- Lot 7: London
- Lot 8: South East
- Lot 9: South West
- Lot 10: Wales
- Lot 11: Scotland



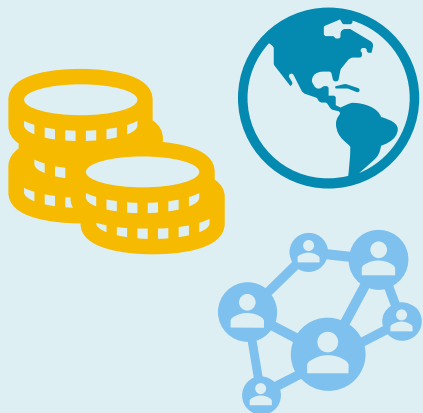
Cirrus Purchasing care about the environment and would like to help our consortium members reach net carbon zero by 2050, how they dispose of their waste plays a vital part in this. As an SME organisation we've remained a completely carbon negative company ourselves for 12 consecutive years, that's why we wanted to work with framework suppliers who are doing their bit too.

All suppliers on the waste framework were asked at tender about how they will maximise the recycling/reuse of consortium member's waste, how they track environmental metrics and report this and how they will work with consortium members to minimise the environmental impact of their call-off contracts.

This information is available to our consortium members on request when conducting a call-off contract under the framework.



## Social Value



The framework takes a flexible approach to social value to allow each member to meet their individual social aims and objectives. To meet your own social value goals you can:

- ▶ Use a supplier's off the shelf readymade social value framework package, or
- ▶ Design your own bespoke social value requirements, tailored to suit your needs

Cirrus Purchasing can support you through this process if required.

# How to Award



## **DIRECT AWARD OR MINI COMPETITION**

You can award your contract via direct award or by re-opening competition through the use of a mini-competition. You can either handle the mini-competition yourself, or Cirrus Purchasing can manage the process on your behalf.

Register your details and notify us that you are trading via the Cirrus Consortium Waste Framework here:

**[www.cirruspurchasing.co.uk/Regform5](http://www.cirruspurchasing.co.uk/Regform5)**

Completing this form automatically gives you free membership to the Cirrus Consortium as well as an audit trail to prove you trade under a PCR compliant framework. You do not need to sign an access agreement with Cirrus Purchasing or the Cirrus Consortium.

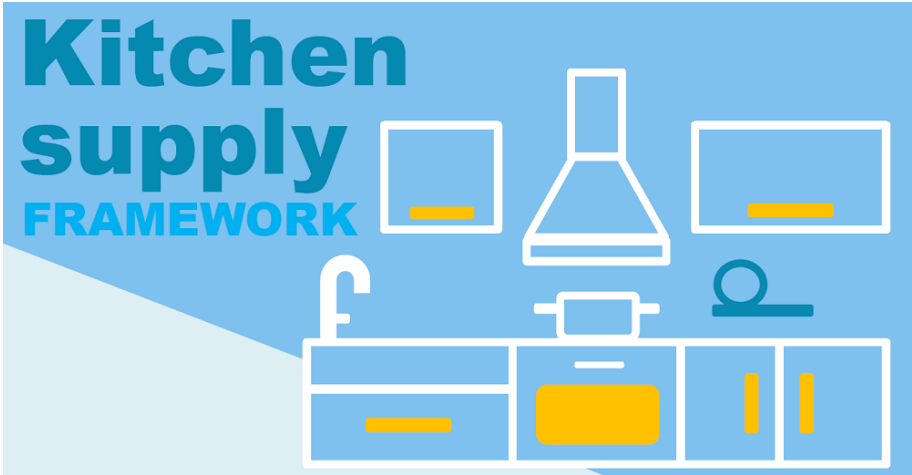


# Other Cirrus Consortium Frameworks




**Building materials**  
FRAMEWORK

The graphic features a blue background with a white sink, a yellow paint can, and two hammers. The text 'Building materials' is in large yellow font, and 'FRAMEWORK' is in smaller blue font below it.



**Kitchen supply**  
FRAMEWORK

The graphic shows a kitchen counter with a sink, a stove, and various kitchen items like a kettle, a toaster, and a coffee maker. The text 'Kitchen supply' is in large blue font, and 'FRAMEWORK' is in smaller blue font below it.



**Agency**  
FRAMEWORK

The graphic depicts four stylized human figures: a person in a hard hat and safety vest, a woman, a man in a suit, and another person in a hard hat. The text 'Agency' is in large blue font, and 'FRAMEWORK' is in smaller blue font below it.

[cirruspurchasing.co.uk](http://cirruspurchasing.co.uk)

Follow us on LinkedIn



Cirrus  
Purchasing